

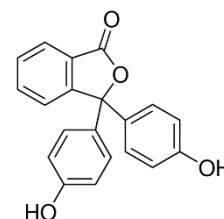


# Product Specification

cdhfinechemical.com

## PHENOLPHTHALEIN pH INDICATOR

<b>PRODUCT CODE</b>	<b>313775</b>
<b>SYNONYMS</b>	--
<b>C.I. NO.</b>	--
<b>CASR NO.</b>	<b>(77-09-8)</b>
<b>ATOMIC OR MOLECULAR FORMULA</b>	<b>C<sub>20</sub>H<sub>14</sub>O<sub>4</sub></b>
<b>ATOMIC OR MOLECULAR WEIGHT</b>	<b>318.33</b>
<b>PROPERTIES</b>	--



<b>PARAMETER</b>	<b>LIMIT</b>
Description	White to off white powder.
Solubility	Soluble in methanol.
Minimum Assay(on dried subs.)	98.0%
Melting Point	261 – 263°C
pH Transition Range	pH 8.2 - 9.8 Colourless - red violet
Absorption maxima(in pH 9.8)	551 - 554 nm
Clarity of solution	To pass the test.
Absorptivity (A1% / 1cm at \ (pH 9.8); on dried substance)	700 - 750
Sensitivity	To pass the test.

**MAXIMUM LIMIT OF IMPURITY**

Loss on drying (at 110°C)	1.0%
---------------------------	------

**Note(s) :Assay (if applicable) method mentioned.**

<b>WARNING</b> <b>Hazard statements</b> : Suspected of causing cancer <b>Precautionary statements</b> <b>Prevention:</b> Do not handle until all safety precautions have been read and understood. Use personal protective equipment as required. Obtain special instructions before use. <b>Response:</b> If exposed or concerned: Get medical attention advice.	IMDG Code : UN No. : IATA :
--	-----------------------------------

**Disposal:** The chemical should be mixed combustible solvent and burnt in a chemical incinerator equipped with burner and scrubber

Hazard Pictogram(s) :-

GHS08

Replace date 26-May-2023