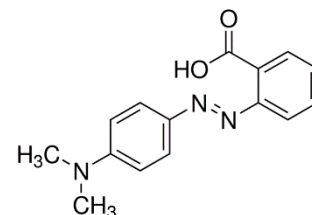


METHYL RED AR/ACS pH INDICATOR

PRODUCT CODE	306275
SYNONYMS	--
C.I. NO.	13020
CASR NO.	(493-52-7)
ATOMIC OR MOLECULARFORMULA	C ₁₅ H ₁₅ N ₃ O ₂
ATOMIC OR MOLECULARWEIGHT	269.30
PROPERTIES	Almost insoluble in water. Soluble in alcohol and in acetic acid.



PARAMETER	LIMIT
Description	Red, dark red, maroon or violet powder.
Solubility	Soluble in alcohol and in acetic acid.
Identification (UV-VIS Spectrum)	Passes test.
Absorption maximum	
λ 1 (pH 4.5)	523-526 nm
λ 1 (pH 6.2)	427-437 nm
Absorptivity (on dried sub.) (A1%/1 cm at λ 1 max pH 4.5)	1330 - 1430
(A1%/1 cm at λ 2max pH 6.2)	700 - 800
Clarity of alcohol solution	Passes test.
Visual Transition Interval	From pH 4.2 – pink to pH 5.5 - Orange to pH 6.2 - yellow
Melting point	179-182°C

MAXIMUM LIMIT OF IMPURITY

Loss on drying (at 110°C)	5.0%
---------------------------	------

Note(s) : 1] Assay (if applicable) method mentioned.

WARNING

Hazard statements :Not hazardous. No hazards.

Precautionary statements

Prevention: -----

Response: ---

IMDG Code :

UN No. :

IATA :

Disposal :-----

Hazard Pictogram(s) :

Replace date 17-June-2023