

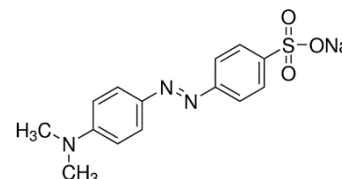


Product Specification

cdhfinechemical.com

METHYL ORANGE pH INDICATOR

PRODUCT CODE	306205
SYNONYMS	--
C.I. NO.	13025
CASR NO.	(547-58-0)
ATOMIC OR MOLECULARFORMULA	C ₁₄ H ₁₄ N ₃ NaO ₃ S
ATOMIC OR MOLECULARWEIGHT	327.34
PROPERTIES	Practically insoluble in alcohol.



PARAMETER	LIMIT
Dye Content (Titanometry; on dried substance)	> 85.0%
pH Transition Range	pH 3.1 - 4.4 Pink - Orange yellow
Absorption maximum	
λ 1 (pH 3.1)	501 - 504 nm
λ 2 (pH 4.4)	467 - 471 nm
Absorptivity (A1% / 1 cm at	
λ 1(pH 3.1);	1050 - 1150
λ 2 (pH 4.4);	750 - 850
on dried substance)	
Clarity of solution	To pass the test.

MAXIMUM LIMIT OF IMPURITY

Loss on drying (at 110°C)	5.0%
---------------------------	------

Note(s) : 1] Assay (if applicable) method mentioned.

DANGER

Hazard statements :Toxic if swallowed. May cause allergic skin reaction

Precautionary statements

Prevention :Avoid breathing dust/fume/gas/mist/vapours/spray. Contaminated clothing should not be allowed out of the workplace. Wash hands thoroughly after handling. Do not eat, drink or smoke when using this product.

Response :Wash contaminated clothing before reuse. IF ON SKIN: Gently wash with plenty of soap and water.

If skin irritation or rash occurs, seek medical advice/attention. IF SWALLOWED: Immediately call a POISON CENTER or doctor/physician. Specific treatment: refer to Label or MSDS.

Disposal :Dispose of contents and container in accordance with relevant legislation.

IMDG Code : 6.1/III
UN No. : 3143
IATA : 6.1

Hazard Pictogram(s) :



GHS06

Replace date 26-May-23